

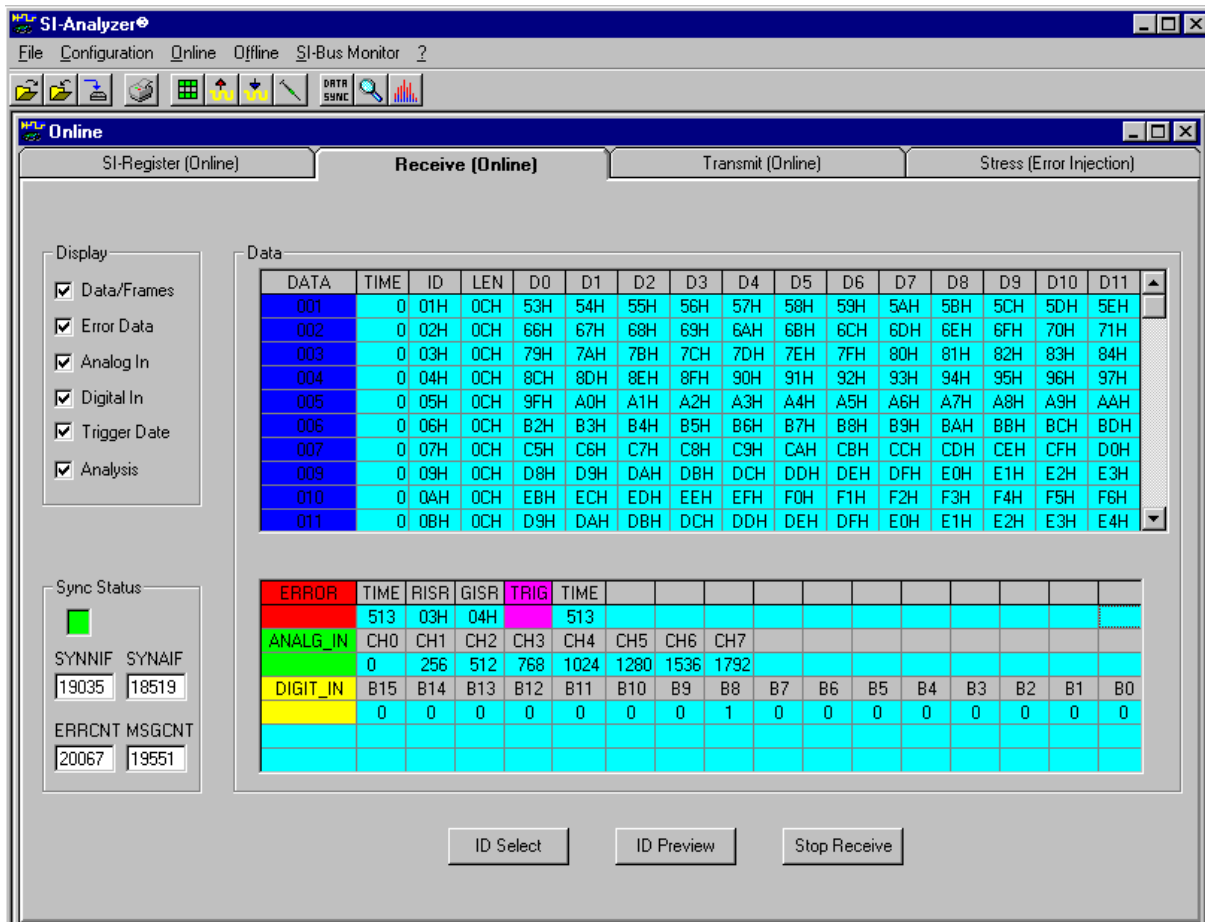
CRST
Gesellschaft für Software und Systeme mbH

Münchener Str. 4a
82131 Gauting
Tel. 089-8931043
Fax: 089-8931044
E-Mail: CRST-Software@t-online.de

SI-Analyzer®

Overview

The SI-Analyzer is an universal development tool for „byteflight“ (SI-Bus) systems and serves as an online and offline analysis tool to evaluate the SI-Bus traffic. Powerful functions together with user-definable parameters (so-called „actions“) fulfil all requirements in the field of SI-Bus analysis. The SI-Analyzer runs on the Windows® 95 and Windows® NT operating systems.



SI-Analyzer®

Online functions

- Direct read and write of SI-ASIC registers.
- SI-Bus master and slave operating modes.
- Receive and display of SI-Bus data, error data, trigger events, analog/digital data and SYNC pulses.
- ID preview
- Transmit of SI-Bus messages in single shot and cyclic transmit mode.

Offline functions

- Data source SI-Bus Monitor or local binary file.
- Offline display and analysis of SI-Bus traffic previously captured on the SI-Bus Monitor together with conversion into ASCII format and log files creation.
- Filtering of particular IDs or messages.
- Find messages or message patterns.
- Configurable flow control for filter and find functions via so called „Script“ commands.
- Saving of processed data in ASCII or binary format, saving of data subsets in a particular range (Prescan/Postscan).
- Inclusion of specific header files into the binary file to be created.

Analysis and statistic functions

- Total number of SI-Bus messages.
- Amount of data, SYNC, SYNCA, digital, analog, trigger, raw data and error messages.
- Start time, end time and overall time of the trace. Maximum, minimum and average cycle times between all messages.
- Bus load (messages per second), errors per second.
- Number of particular IDs, maximum, minimum and average ID cycle times. Number of IDs which exceed or are below the predefined ID nominal values. Size error for particular IDs.

SI-Bus Monitor configuration

- SI-Bus Monitor hardware configuration, directly and via so called „Actions“.
- Remote SI-Bus Monitor control via SI-Analyzer software.

System preconditions

- Windows® 95 oder Windows®-NT 4.0 operating system
- PC with AMD-K6® or Pentium® processor and min. 32 MB main memory
- Unused parallel port (EPP) to connect the SI-Bus Monitor